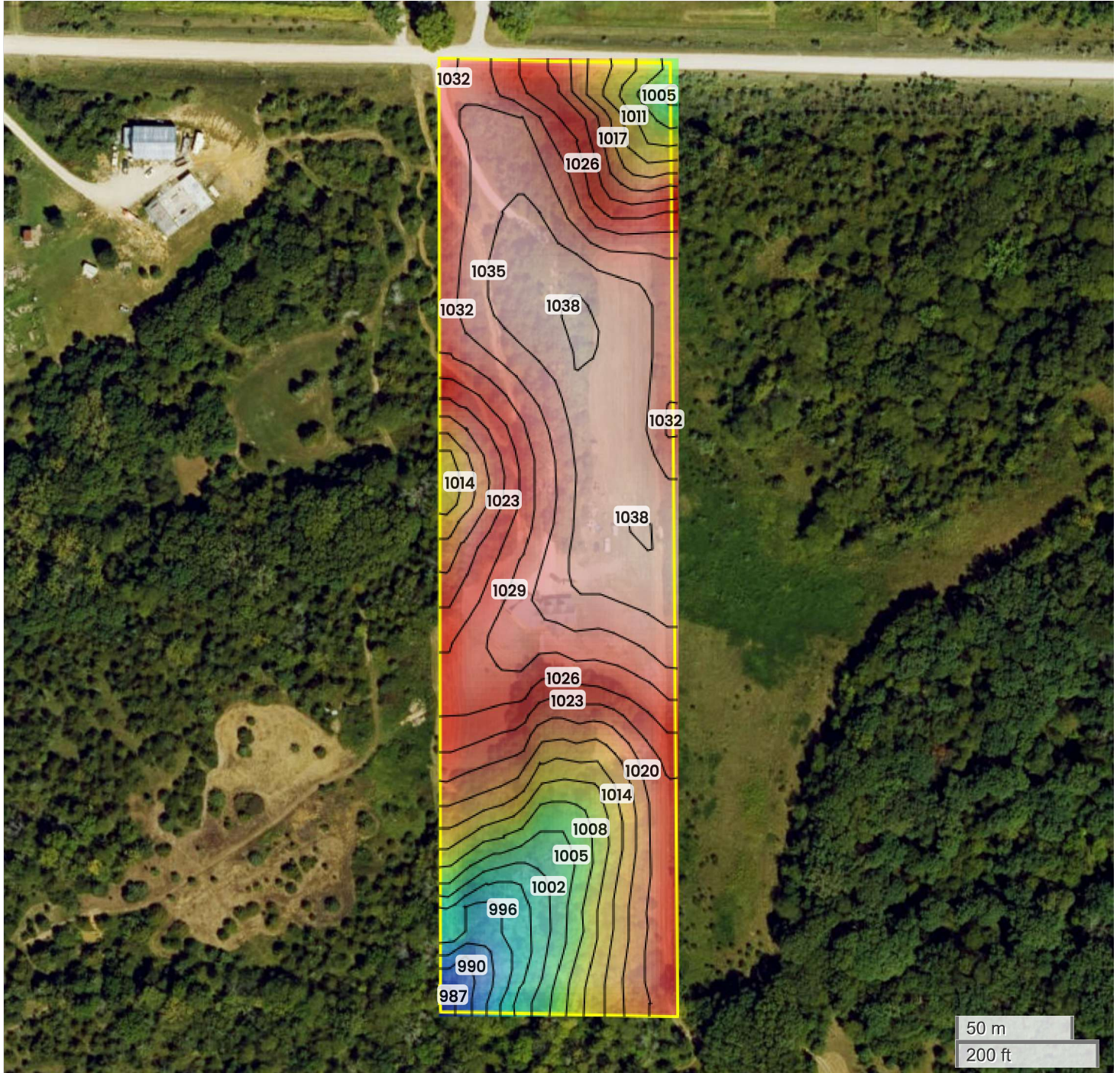




7708 VIRGINIA STREET  
TOPOGRAPHY



Center: 41.174476, -93.659113

31-74N-24W

Squaw Township  
Warren County, IA

Source:	USGS 10m DEM
Interval(ft):	3
Max:	1038.0 ft
Min:	987.0 ft
Range:	51.0 ft
Average:	1012.5 ft



FarmWorth, LLC makes no warranties, express or implied, regarding the accuracy of any information provided through FarmWorth.com. User is solely responsible for independently verifying all information prior to use and waives any claims against FarmWorth, LLC arising from inaccuracies in such information.